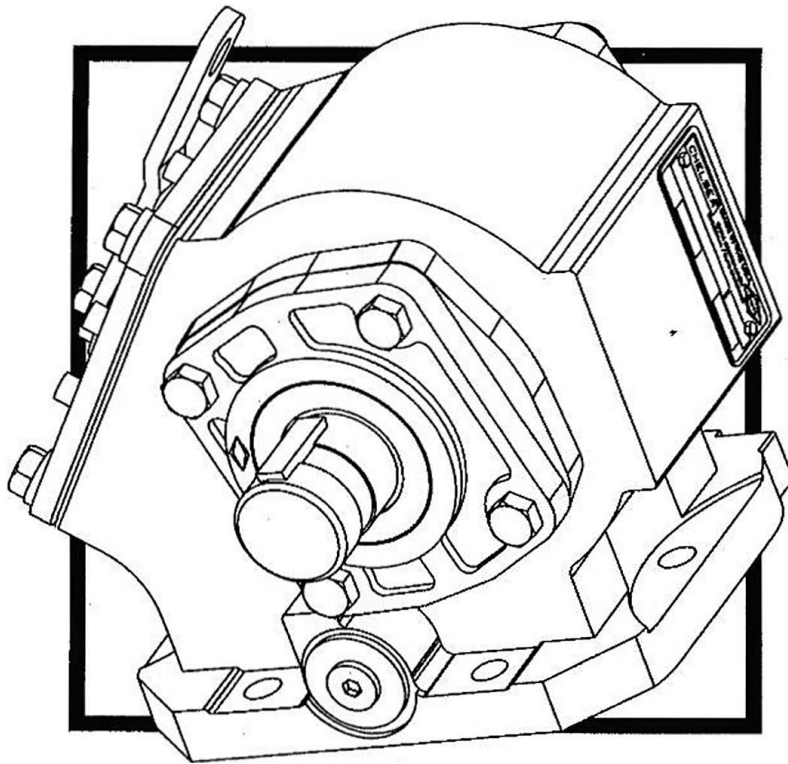


Brought to you by Pro Gear & Transmission courtesy of Parker Hannifin Chelsea PTO



For parts or service call us Pro Gear & Transmission, Inc. (877) 776-4600 or (407) 872-1901 [parts@progear.com](mailto:parts@progear.com)

**REPLACEMENT PARTS LIST 440,446 & 488  
SERIES POWER TAKE-OFFS MANUAL  
S.A.E. SIX OR EIGHT HOLE, TWO GEAR-SINGLE SPEED**



**CHELSEA**

**P410-440  
MARCH, 1996**

**SUPERSEDES  
P410-440  
DATED FEBRUARY 1994**



For parts or service call us  
Pro Gear & Transmission, Inc.



**1 (877) 776-4600**

**(407) 872-1901**

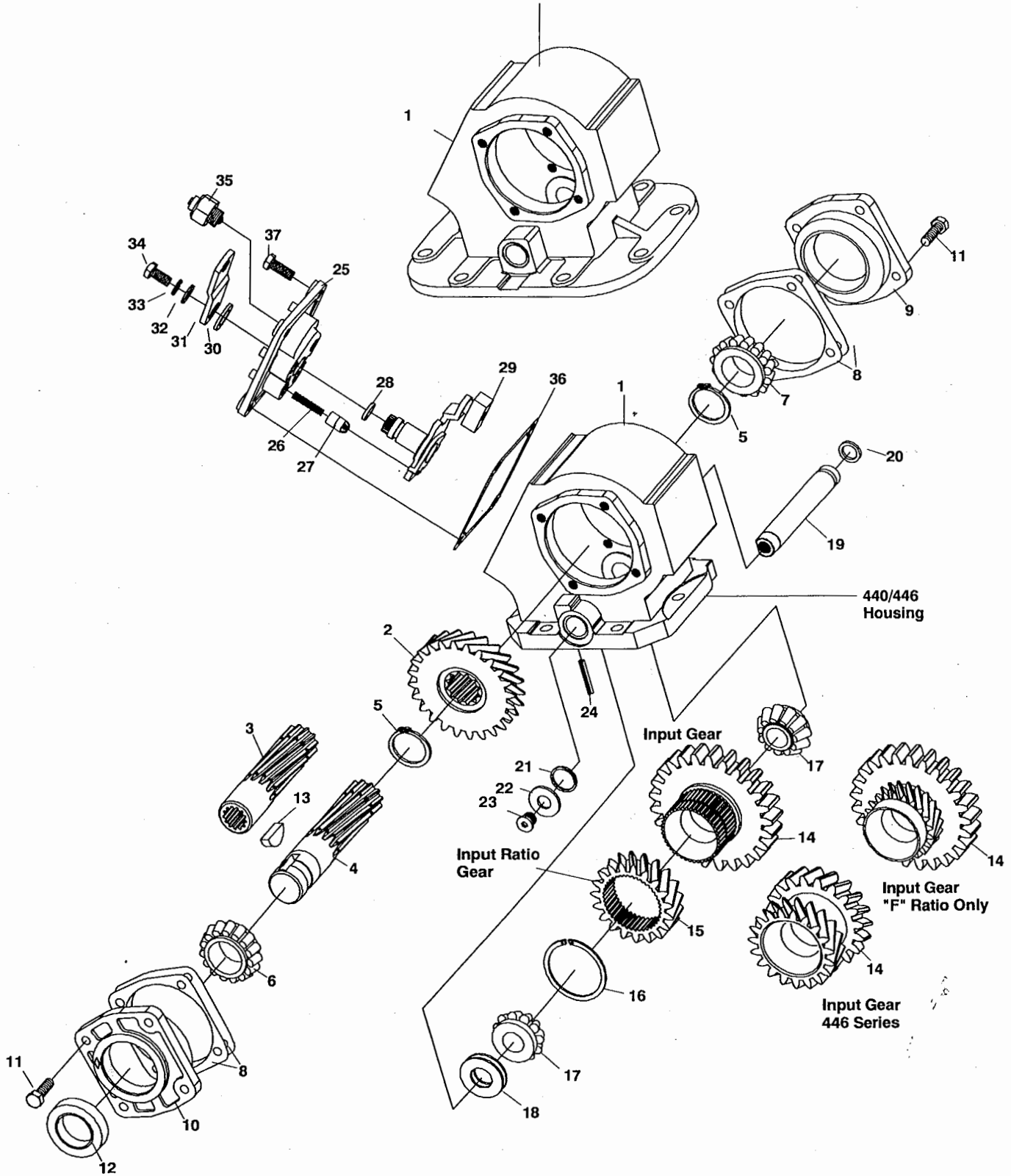
**parts@eprogear.com**

**906 W. Gore St.**

**Orlando, FL 32805**



488 Series Housing



| Item | Part Number             | Description                                       | Quantity |      |      |
|------|-------------------------|---|----------|------|------|
|      |                         |   | 440      | 446  | 488  |
| 1    | 1-P-495X                | HOUSING, Standard Mount (Includes Item 24) . . .  | 1        | 1    | -    |
|      | 1-P-496X                | HOUSING, Deep Mount (Includes Item 24) . . . . .  | 1        | 1    | -    |
|      | 1-P-499X                | HOUSING, 8-Bolt Standard Mount (Includes Item 24) | -        | -    | 1    |
|      | 1-P-527                 | HOUSING, Special for JATCO . . . . .              | 1        | -    | -    |
| 2    | See Chart Pgs. 14,16,17 | OUTPUT GEAR . . . . .                             | 1        | 1    | 1    |
| 3    | See Chart Pg. 19        | OUTPUT SHAFT, Pump Mount . . . . .                | 1        | 1    | 1    |
| 4    | 3-P-202                 | OUTPUT SHAFT, Standard 1 1/4" Rd. 5/16 K.W. .     | 1        | 1    | 1    |
| 5    | 378391                  | LOCKRING . . . . .                                | 2        | 2    | 2    |
| 6    | 550397                  | BEARING CONE. . . . .                             | 1        | 1    | 1    |
| 7    | 550532                  | BEARING CONE. . . . .                             | 1        | 1    | 1    |
| 8    | 22-P-24-1               | BEARING CAP GASKET (.010) . . . . .               | A.R.     | A.R. | A.R. |
|      | 22-P-24-2               | BEARING CAP GASKET (.020) . . . . .               | A.R.     | A.R. | A.R. |
|      | 22-P-24-3               | BEARING CAP GASKET (.015) . . . . .               | A.R.     | A.R. | A.R. |
| 9    | 328274X                 | BEARING CAP ASS'Y, Closed End . . . . .           | 1        | 1    | 1    |
| N.S. | 550221                  | BEARING RACE. . . . .                             | 1        | 1    | 1    |
| 10   | 328273X                 | BEARING CAP ASS'Y, Open End . . . . .             | 1        | 1    | 1    |
| N.S. | 550221                  | BEARING RACE. . . . .                             | 1        | 1    | 1    |
|      | See Chart Pg. 19        | BEARING CAP ASS'Y, Pump Mount . . . . .           | 1        | 1    | 1    |
| 11   | 378430-10               | HEX CAPSCREW .312-18 x 1.000" . . . . .           | 4        | 4    | 4    |
| 12   | See Chart Pg. 19        | OIL SEAL, Pump Mount . . . . .                    | 1        | 1    | 1    |
|      | 28-P-216                | OIL SEAL, Standard Output Shaft . . . . .         | 1        | 1    | 1    |
| 13   | 500007-29               | WOODRUFF KEY. . . . .                             | 1        | 1    | 1    |
| 14   | See Chart Pg. 13-17     | INPUT GEAR . . . . .                              | 1        | 1    | 1    |
| 15   | See Chart Pg. 17        | INPUT RATIO GEAR . . . . .                        | 1        | 1    | 1    |
| 16   | 379522                  | LOCK RING. . . . .                                | 1        | 1    | 1    |
| 17   | 550439                  | BEARING CONE. . . . .                             | 2        | 2    | 2    |
| 18   | 14-P-15                 | SPACER, Input Gear . . . . .                      | A.R.     | A.R. | A.R. |
| 19   | 9-P-74                  | IDLER SHAFT, Standard . . . . .                   | 1        | 1    | 1    |
|      | 9-P-76                  | IDLER SHAFT, Pressure Lube . . . . .              | 1        | 1    | 1    |
| 20   | 28-P-191                | O-RING . . . . .                                  | 1        | 1    | 1    |
| 21   | 28-P-190                | O-RING . . . . .                                  | 1        | 1    | 1    |
| 22   | 379542                  | RETAINER, O-RING. . . . .                         | 1        | 1    | 1    |
| 23   | 379484                  | STRAIGHT THREAD HEX SOCKET . . . . .              | 1        | 1    | 1    |
| 24   | 500597-14               | ROLL PIN (1" long), Deep Mount . . . . .          | 1        | 1    | 1    |
|      | 500597-16               | ROLL PIN (1.125" long), Standard Mount . . . . .  | 1        | 1    | 1    |
|      |                         | <b>CABLE CONTROL COVER ASSEMBLIES</b>             |          |      |      |
|      |                         | FOR RATIOS Q, W, & X                              |          |      |      |
|      | 329119-1X               | ASSEMBLIES 3 & 6 . . . . .                        | 1        | -    | 1    |
|      | 329119-2X               | ASSEMBLIES 4 & 5 . . . . .                        | 1        | -    | 1    |
|      |                         | FOR RATIOS F, L, R, S, & U                        |          |      |      |
|      | 329121-1X               | ASSEMBLIES 3 & 6 . . . . .                        | 1        | -    | 1    |
|      | 329121-2X               | ASSEMBLIES 4 & 5 . . . . .                        | 1        | -    | 1    |
|      |                         | FOR RATIOS Q & W                                  |          |      |      |
|      | 329151-1X               | ASSEMBLIES 3 & 6 . . . . .                        | -        | 1    | -    |
|      | 329151-2X               | ASSEMBLIES 4 & 5 . . . . .                        | -        | 1    | -    |
|      |                         | FOR RATIOS R, S & U                               |          |      |      |
|      | 329152-1X               | ASSEMBLIES 3 & 6 . . . . .                        | -        | 1    | -    |
|      | 329152-2X               | ASSEMBLIES 4 & 5 . . . . .                        | -        | 1    | -    |

N.S. — Not Shown      A.R. — As Required

Table continued on following page.



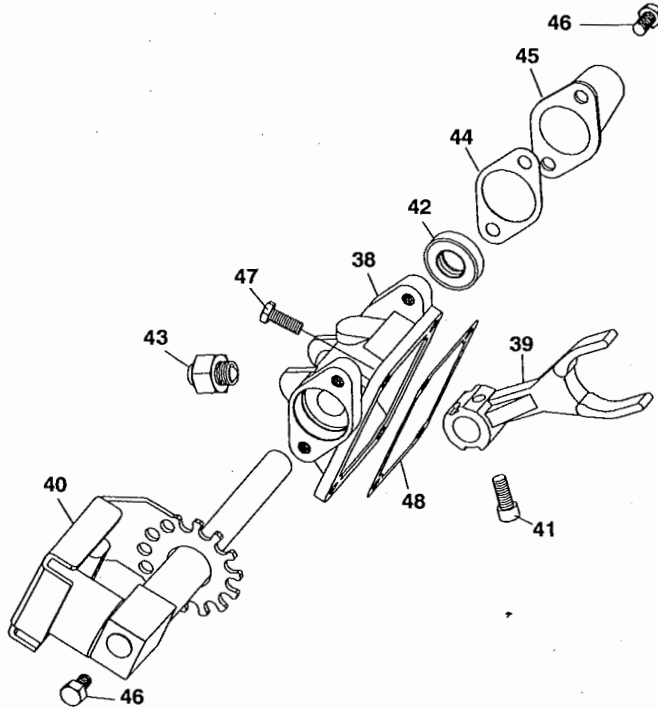
| Item   | Part Number  | Description  | Quantity |     |     |
|--|--------------|--|----------|-----|-----|
|  |              |  | 440      | 446 | 488 |
| All the shift cover assemblies shown on previous page include items 25 thru 35 |              |  |          |     |     |
| 25   | 34-P-74      | SHIFTER COVER.....   | 1        | 1   | 1   |
| 26   | 37-P-19      | SPRING.....  | 1        | 1   | 1   |
| 27   | 63-P-16      | POPPET PIN.....  | 1        | 1   | 1   |
| 28   | 28-P-191     | O-RING.....  | 1        | 1   | 1   |
| 29   | 329118-1X    | POST & PLATE ASS'Y FOR RATIOS Q, W, & X<br>FOR ASSEMBLIES 3 & 6.....           | 1        | 1   | 1   |
|  | 329118-2X    | FOR ASSEMBLIES 4 & 5.....  | 1        | 1   | 1   |
| 29   | 329120-1X or | POST & PLATE ASS'Y FOR RATIOS F, L, R, S & U<br>FOR ASSEMBLIES 3 & 6.....      | 1        | 1   | 1   |
|  | 329120-2X    | FOR ASSEMBLIES 4 & 5.....  | 1        | 1   | 1   |
| 30   | 378004       | FLAT WASHER.....   | 1        | 1   | 1   |
| 31   | 51-P-22      | SHIFTER LEVER.....   | 1        | 1   | 1   |
| 32   | 500365-22    | FLAT WASHER.....   | 1        | 1   | 1   |
| 33   | 500356-10    | LOCK WASHER.....   | 1        | 1   | 1   |
| 34   | 500409-6     | HEX CAPSCREW.....  | 1        | -   | 1   |
| 35   | 379639       | INDICATOR SWITCH, Pin Style.....   | 1        | -   | 1   |
|  | 379652       | INDICATOR SWITCH, Pin Style.....   | -        | 1   | -   |
| 36   | 35-P-8       | GASKET, SHIFT COVER.....   | 1        | 1   | 1   |
| 37   | 378430-9     | HEX CAPSCREW .312-18 X .875.....   | 4        | 4   | 4   |
| <b>PARTS SHIPPED LOOSE</b>   |              |  |          |     |     |
|  | 328170-200X  | STUD KIT (For pump mounts AF, AZ, FF,<br>LB, LC, LF, XE, XK, XO, XP & XQ)..... | -        | -   | 1   |
|  | 328170-127X  | STUD KIT, Standard Mount.....  | -        | -   | 1   |
|  | 328170-76X   | STUD KIT, Standard Mount.....  | 1        | 1   | -   |
|  | 328170-77X   | STUD KIT, Deep Mount.....  | 1        | 1   | -   |
|  | 7170-72X     | STUD KIT, Metric Standard Mount.....   | 1        | -   | -   |
|  | 328346-10X   | CABLE CONTROL ASSEMBLY.....<br>(Includes 378441-10 Cable and 378502 Knob)      | 1        | 1   | 1   |
|  | 328380X      | WIRE CONTROL PARTS BAG.....  | 1        | 1   | 1   |
|  | 328388-37X   | AIR SHIFT INSTALLATION KIT.....  | 1        | 1   | 1   |
|  | 328388-47X   | ELECTRIC/AIR INSTALLATION KIT 12V.....   | 1        | 1   | 1   |
|  | 328388-48X   | ELECTRIC/AIR INSTALLATION KIT 24V.....   | 1        | 1   | 1   |
|  | 329166-12X   | ELECTRIC SHIFT INSTALLATION KIT 12V.....                                       | 1        | 1   | 1   |
|  | 328388-69X   | COMBO VALVE KIT, Converts single air to dual air.                              | 1        | 1   | 1   |
|  | 328751X      | INDICATOR LIGHT INSTALLATION KIT.....  | 1        | 1   | 1   |
|  | 68-P-18      | NAME PLATE.....  | 1        | 1   | 1   |
|  | 378978       | 12V INDICATOR LIGHT.....   | 1        | 1   | 1   |
|  | 378884       | 9-AMP FUSE HOLDER.....   | 1        | 1   | 1   |
|  | 379319       | INDICATOR SWITCH BOOT.....   | 1        | 1   | 1   |
|  | 328711X      | PUMP MOUNTING KIT ("XR" Output).....   | 1        | 1   | 1   |
|  | 328948-6X    | GASKETS & INSTALLATION INSTRUCTIONS....  | 1        | 1   | -   |
|  | 328948-8X    | GASKETS & INSTALLATION INSTRUCTIONS....  | -        | -   | 1   |



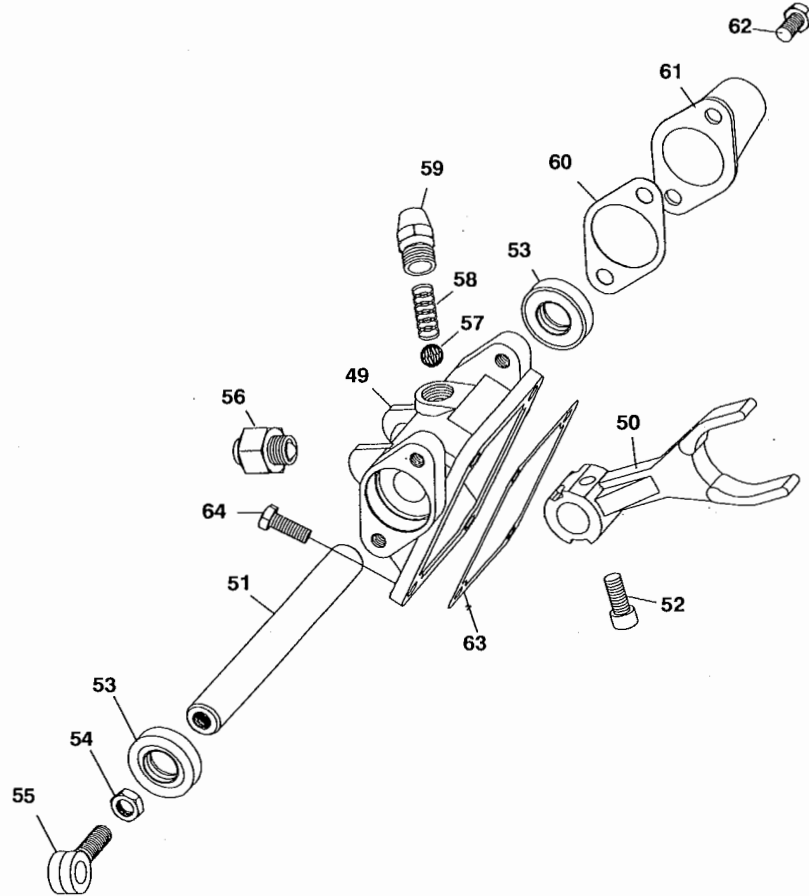
**SERVICE KITS**

| Item | Part Number | Description   | Quantity |     |     |
|------|-------------|---|----------|-----|-----|
|      |             |   | 440      | 446 | 488 |
|      |             | <b>SERVICE AND REPAIR KITS</b>  |          |     |     |
|      | 329202X     | SERVICE KIT (Includes 379639, 379640 & 379252)                          | 1        | -   | 1   |
|      | 329218X     | SERVICE KIT (Includes 379640 & 379252) . . . . .                        | 1        | 1   | 1   |
|      | 329221X     | SERVICE KIT (Includes 379652, 379640 & 379252)                          | -        | 1   | -   |
|      | 328356-13X  | GASKET & SEAL KIT . . . . .   | 1        | 1   | -   |
|      | 328356-50X  | GASKET & SEAL KIT . . . . .   | -        | -   | 1   |
|      | 328356-15X  | SHIFT COVER SEAL KIT (Cable Control) . . . . .                          | 1        | 1   | 1   |
|      | 328356-17X  | SHIFT COVER SEAL KIT (Air Shift) . . . . .                              | 1        | 1   | 1   |
|      | 328356-26X  | SHIFT COVER SEAL KIT (Lever Control) . . . . .                          | 1        | 1   | 1   |
|      | 329143X     | SHIFT SHAFT COVER KIT . . . . .<br>(Includes Items 60, 61, 62 on pg. 7) | 1        | 1   | 1   |
|      | 328594-8X   | REPAIR KIT, Standard Idler Shaft<br>(Contains Items Listed Below)       |          |     |     |
|      | 9-P-74      | IDLER SHAFT . . . . .   | 1        | 1   | 1   |
|      | 14-P-15-1   | SPACER, Input Gear (.055) . . . . .                                     | 2        | 2   | 2   |
|      | 14-P-15-2   | SPACER, Input Gear (.060)* . . . . .                                    | 2        | 2   | 2   |
|      | 14-P-15-3   | SPACER, Input Gear (.065) . . . . .                                     | 2        | 2   | 2   |
|      | 379484      | HEX SOCKET, Straight Thread . . . . .                                   | 1        | 1   | 1   |
|      | 379542      | RETAINER, O-Ring . . . . .  | 1        | 1   | 1   |
|      | 28-P-190    | O-RING . . . . .  | 1        | 1   | 1   |
|      | 28-P-191    | O-RING . . . . .  | 1        | 1   | 1   |
|      | 550439      | BEARING CONE . . . . .  | 2        | 2   | 2   |
|      | 328594-9X   | REPAIR KIT, Pressure Lube Idler Shaft<br>(Contains Items Listed Below)  |          |     |     |
|      | 9-P-76      | IDLER SHAFT, Pressure Lubed . . . . .                                   | 1        | 1   | 1   |
|      | 14-P-15-1   | SPACER, Input Gear (.055) . . . . .                                     | 2        | 2   | 2   |
|      | 14-P-15-2   | SPACER, Input Gear (.060) . . . . .                                     | 2        | 2   | 2   |
|      | 14-P-15-3   | SPACER, Input Gear (.065) . . . . .                                     | 2        | 2   | 2   |
|      | 379484      | HEX SOCKET, Straight Thread . . . . .                                   | 1        | 1   | 1   |
|      | 379542      | RETAINER, O-Ring . . . . .  | 1        | 1   | 1   |
|      | 28-P-190    | O-RING . . . . .  | 1        | 1   | 1   |
|      | 28-P-191    | O-RING . . . . .  | 1        | 1   | 1   |
|      | 550439      | BEARING CONE . . . . .  | 2        | 2   | 2   |
|      | 500841-1    | 90° ELBOW . . . . .   | 1        | 1   | 1   |

440, 446 & 488 SERIES  
**E-Z SHIFT™ PARTS ("Z" Designator)**

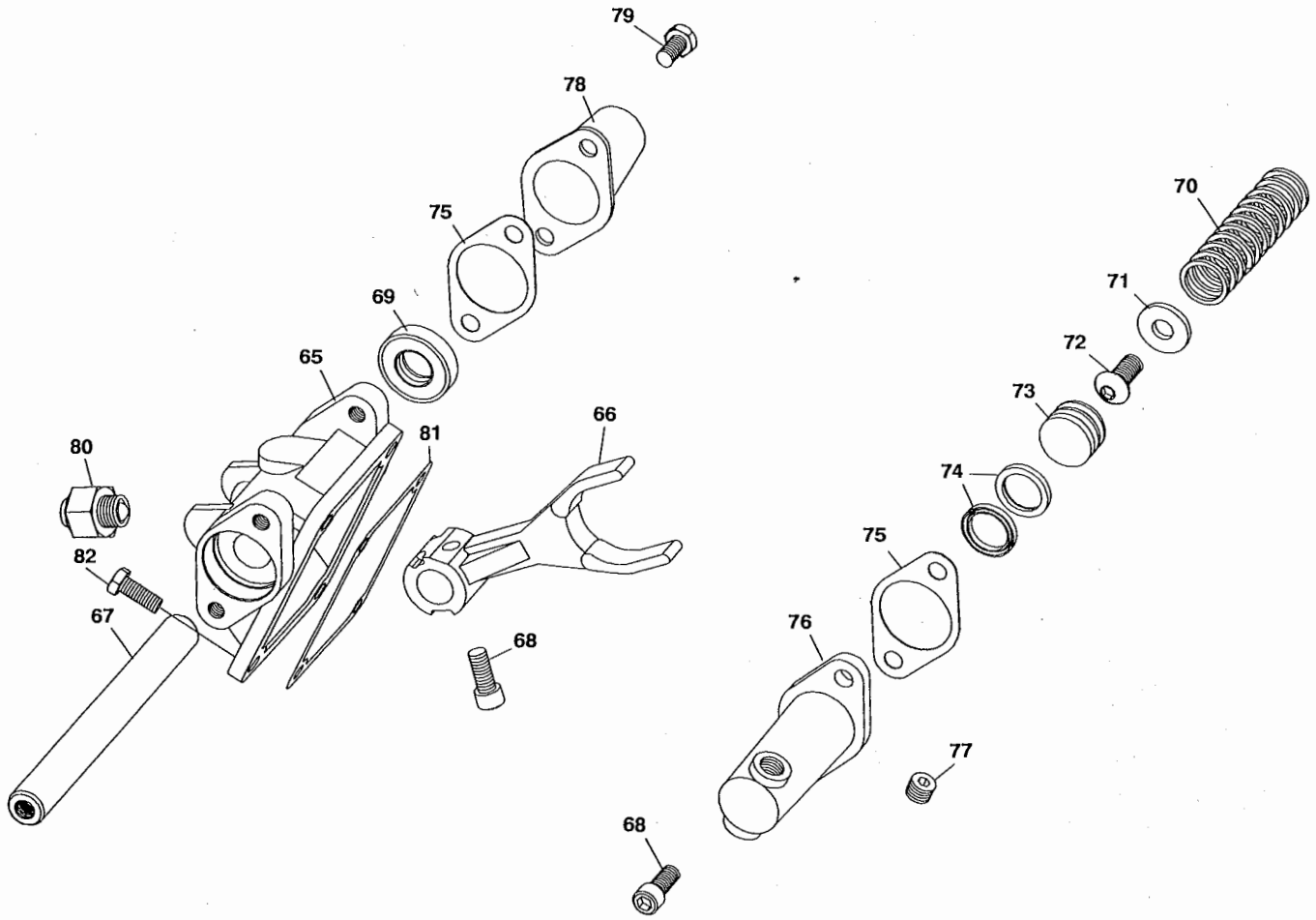


| Item  | Part Number | Description  | Quantity |     |     |
|---|-------------|--|----------|-----|-----|
|   |             |  | 440      | 446 | 488 |
|   | 329165-1X   | SHIFT COVER ASSEMBLY 12V (Ass'y 3 & 6).....                      | 1        | -   | 1   |
|   | 329165-2X   | SHIFT COVER ASSEMBLY 12V (Ass'y 4 & 5).....                      | 1        | -   | 1   |
|   | 329169-1X   | SHIFT COVER ASSEMBLY 12V (Ass'y 3 & 6).....                      | -        | 1   | -   |
|   | 329169-2X   | SHIFT COVER ASSEMBLY 12V (Ass'y 4 & 5).....                      | -        | 1   | -   |
| All the assemblies shown above include items 38 thru 46 |             |  |          |     |     |
| 38  | 34-P-76     | SHIFT COVER .....  | 1        | 1   | 1   |
| 39  | 32-P-166    | SHIFTER FORK .....   | 1        | 1   | 1   |
| 40  | 329162-12X  | ELECTRIC SHIFT ASS'Y.....  | 1        | 1   | 1   |
| 41  | 378447-4    | SOCKET HEAD CAPSCREW .....                                       | 1        | 1   | 1   |
| 42  | 28-P-207    | OIL SEAL .....   | 1        | 1   | 1   |
| 43  | 379639      | INDICATOR SWITCH.....  | 1        | -   | 1   |
|   | 379652      | INDICATOR SWITCH.....  | -        | 1   | -   |
| 44  | 35-P-14     | GASKET, Shifter Shaft Cover.....                                 | 1        | 1   | 1   |
| 45  | 65-P-23     | SHIFTER SHAFT COVER .....  | 1        | 1   | 1   |
| 46  | 378430-4    | HEX CAPSCREW .312-18 x .500".....                                | 4        | 4   | 4   |
| 47  | 378430-8    | HEX CAPSCREW .312-18 x .750".....                                | 4        | 4   | 4   |
| 48  | 35-P-8      | GASKET, Shifter Cover.....                                       | 1        | 1   | 1   |
| <b>E-Z SHIFT CONVERSION KITS</b>                        |             |  |          |     |     |
|   | 328390-138X | CABLE TO E-Z SHIFT (Ass'y 3 & 6).....                            | 1        | -   | 1   |
|   | 328390-139X | CABLE TO E-Z SHIFT (Ass'y 4 & 5).....                            | 1        | -   | 1   |
|   | 328390-141X | CABLE TO E-Z SHIFT - Q & W Ratios Only<br>(Ass'y 3 & 6) .....    | -        | 1   | -   |
|   | 328390-142X | CABLE TO E-Z SHIFT - Q & W Ratios Only<br>(Ass'y 4 & 5) .....    | -        | 1   | -   |
|   | 328390-143X | CABLE TO E-Z SHIFT - R, S & U Ratios Only<br>(Ass'y 3 & 6) ..... | -        | 1   | -   |
|   | 328390-144X | CABLE TO E-Z SHIFT - R, S & U Ratios Only<br>(Ass'y 4 & 5) ..... | -        | 1   | -   |
|   | 328390-140X | LEVER TO E-Z SHIFT .....   | 1        | 1   | 1   |



| Item  | Part Number | Description                            | Quantity |     |     |
|---|-------------|--|----------|-----|-----|
|   |             |  | 440      | 446 | 488 |
|   | 329035-1X   | LEVER CONTROL ASS'Y (Ass'y 3 & 6)..... | 1        | -   | 1   |
|   | 329035-2X   | LEVER CONTROL ASS'Y (Ass'y 4 & 5)..... | 1        | -   | 1   |
|   | 329040-1X   | LEVER CONTROL ASS'Y (Ass'y 3 & 6)..... | -        | 1   | -   |
|   | 329040-2X   | LEVER CONTROL ASS'Y (Ass'y 4 & 5)..... | -        | 1   | -   |
| Assemblies shown above include items 49 thru 62 |             |  |          |     |     |
| 49  | 34-P-87     | SHIFTER COVER.....                     | 1        | 1   | 1   |
| 50  | 32-P-166    | SHIFTER FORK.....                      | 1        | 1   | 1   |
| 51  | 11-P-112    | SHIFTER SHAFT.....                     | 1        | 1   | 1   |
| 52  | 378447-4    | SOCKET HEAD CAPSCREW.....              | 1        | 1   | 1   |
| 53  | 28-P-207    | OIL SEAL.....                          | 2        | 2   | 2   |
| 54  | 500381-3    | HEX LOCK NUT .375-24.....              | 1        | 1   | 1   |
| 55  | 36-P-1      | EYE BOLT.....                          | 1        | 1   | 1   |
| 56  | 379639      | INDICATOR SWITCH.....                  | 1        | -   | 1   |
|   | 379652      | INDICATOR SWITCH.....                  | -        | 1   | -   |
| 57  | 378002      | POPPET BALL.....                       | 1        | 1   | 1   |
| 58  | 37-P-41     | POPPET SPRING.....                     | 1        | 1   | 1   |
| 59  | 378554      | POPPET CAP.....                        | 1        | 1   | 1   |
| 60  | 35-P-14     | GASKET, Shift Shaft Cover.....         | 1        | 1   | 1   |
| 61  | 65-P-23     | SHIFTER SHAFT COVER.....               | 1        | 1   | 1   |
| 62  | 378430-4    | HEX CAPSCREW.....                      | 2        | 2   | 2   |
| 63  | 35-P-8      | GASKET, Shift Cover.....               | 1        | 1   | 1   |
| 64  | 378430-8    | HEX CAPSCREW .312-18 X .750.....       | 4        | 4   | 4   |







**AIR CONTROL PARTS ("A" Designator)**

| Item | Part Number                                     | Description                                  | Quantity |     |     |
|------|---|--|----------|-----|-----|
|      |   |  | 440      | 446 | 488 |
|      | 329036-1X                                       | SHIFT COVER ASSEMBLY (Ass'y 3 & 6) .....     | 1        | -   | 1   |
|      | 329036-2X                                       | SHIFT COVER ASSEMBLY (Ass'y 4 & 5) .....     | 1        | -   | 1   |
|      | 329042-1X                                       | SHIFT COVER ASSEMBLY (Ass'y 3 & 6) .....     | -        | 1   | -   |
|      | 329042-2X                                       | SHIFT COVER ASSEMBLY (Ass'y 4 & 5) .....     | -        | 1   | -   |
|      | Assemblies shown above include items 65 thru 80 |  |          |     |     |
| 65   | 34-P-76   | SHIFTER COVER .....                          | 1        | 1   | 1   |
| 66   | 32-P-166  | SHIFTER FORK .....                           | 1        | 1   | 1   |
| 67   | 11-P-112  | SHIFTER SHAFT .....                          | 1        | 1   | 1   |
| 68   | 378447-4  | SOCKET HEAD CAPSCREW .312-18 x .750" ..      | 3        | 3   | 3   |
| 69   | 28-P-207  | OIL SEAL .....                               | 1        | 1   | 1   |
| 70   | 37-P-25   | RETURN SPRING .....                          | 1        | 1   | 1   |
| 71   | 378462  | WASHER .....                                 | 1        | 1   | 1   |
| 72   | 378908  | BUTTON HEAD CAPSCREW .....                   | 1        | 1   | 1   |
| 73   | 66-P-4  | PISTON .....                                 | 1        | 1   | 1   |
| 74   | 28-P-256  | BLOCK VEE RING .....                         | 2        | 2   | 2   |
| 75   | 35-P-14   | GASKET, Shifter Shaft Cover .....            | 2        | 2   | 2   |
| 76   | 65-P-14   | CYLINDER .....                               | 1        | 1   | 1   |
| 77   | 379231  | PIPE PLUG .....                              | 1        | 1   | 1   |
| 78   | 65-P-23   | SHIFTER SHAFT COVER .....                    | 1        | 1   | 1   |
| 79   | 378430-4  | HEX CAPSCREW .312-18 x .500" .....           | 2        | 2   | 2   |
| 80   | 379639  | INDICATOR SWITCH .....                       | 1        | -   | 1   |
|      | 379652  | INDICATOR SWITCH .....                       | -        | 1   | -   |
| 81   | 35-P-8  | GASKET, Shift Cover .....                    | 1        | 1   | 1   |
| 82   | 378430-8  | HEX CAPSCREW .312-18 X .750 .....            | 4        | 4   | 4   |
|      | <b>AIR SHIFT CONVERSION KITS</b>                |  |          |     |     |
|      | 328390-85X                                      | LEVER TO AIR SHIFT .....                     | 1        | 1   | 1   |
|      | 328390-105X                                     | LEVER TO ELECTRIC OVER AIR 12V .....         | 1        | -   | 1   |
|      | 328390-106X                                     | LEVER TO ELECTRIC OVER AIR 24V .....         | 1        | -   | 1   |
|      | 328390-117X                                     | CABLE TO AIR (Ass'y 3 & 6) .....             | 1        | -   | 1   |
|      | 328390-118X                                     | CABLE TO AIR (Ass'y 4 & 5) .....             | 1        | -   | 1   |
|      | 328390-125X                                     | CABLE TO AIR (Ass'y 3 & 6) .....             | -        | 1   | -   |
|      | 328390-126X                                     | CABLE TO AIR (Ass'y 4 & 5) .....             | -        | 1   | -   |
|      | 328390-119X                                     | CABLE TO ELECTRIC/AIR 12V (Ass'y 3 & 6) .... | 1        | -   | 1   |
|      | 328390-120X                                     | CABLE TO ELECTRIC/AIR 24V (Ass'y 3 & 6) .... | 1        | -   | 1   |
|      | 328390-121X                                     | CABLE TO ELECTRIC/AIR 12V (Ass'y 4 & 5) .... | 1        | -   | 1   |
|      | 328390-122X                                     | CABLE TO ELECTRIC/AIR 24V (Ass'y 4 & 5) .... | 1        | -   | 1   |
|      | 328390-131X                                     | CABLE TO ELECTRIC/AIR 12V (Ass'y 3 & 6) .... | -        | 1   | -   |
|      | 328390-133X                                     | CABLE TO ELECTRIC/AIR 24V (Ass'y 3 & 6) .... | -        | 1   | -   |
|      | 328390-132X                                     | CABLE TO ELECTRIC/AIR 12V (Ass'y 4 & 5) .... | -        | 1   | -   |
|      | 328390-134X                                     | CABLE TO ELECTRIC/AIR 24V (Ass'y 4 & 5) .... | -        | 1   | -   |

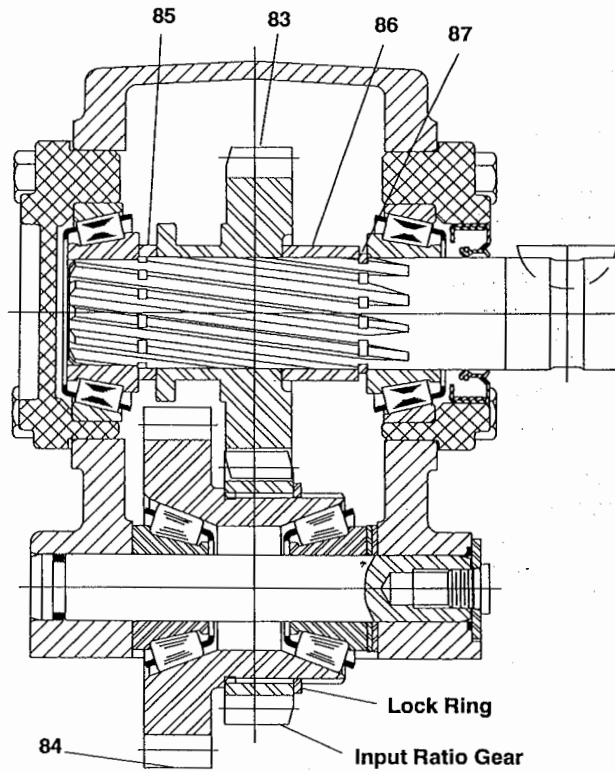
**440, 446 & 488 SERIES  
SHIFTER KITS**



For P.T.O.'s ordered without the shifter (Shifter Type "H"), the kits shown below will provide all the components required to complete the assembly.

| Part Number | Description  |
|-------------|--|
|             | 440 & 488 Series   |
| 329106-39X  | AIR SHIFT (Ass'y 3 & 6)                                      |
| 329106-40X  | AIR SHIFT (Ass'y 4 & 5)                                      |
| 329106-43X  | ELECTRIC/AIR 12V (Ass'y 3 & 6)                               |
| 329106-44X  | ELECTRIC/AIR 12V (Ass'y 4 & 5)                               |
| 329106-45X  | ELECTRIC/AIR 24V (Ass'y 3 & 6)                               |
| 329106-46X  | ELECTRIC/AIR 24V (Ass'y 4 & 5)                               |
| 329106-47X  | LEVER SHIFT (Ass'y 3 & 6)                                    |
| 329106-48X  | LEVER SHIFT (Ass'y 4 & 5)                                    |
| 329106-105X | CABLE SHIFT (Q, W, & X Ratios, Ass'y 3 & 6)                  |
| 329106-106X | CABLE SHIFT (Q, W, & X Ratios, Ass'y 4 & 5)                  |
| 329106-107X | CABLE SHIFT, Less cable (Q, W, & X Ratios, Ass'y 3 & 6)      |
| 329106-108X | CABLE SHIFT, Less Cable (Q, W, & X Ratios, Ass'y 4 & 5)      |
| 329106-109X | CABLE SHIFT (F, L, R, S & U Ratios, Ass'y 3 & 6)             |
| 329106-110X | CABLE SHIFT (F, L, R, S & U Ratios, Ass'y 4 & 5)             |
| 329106-111X | CABLE SHIFT, Less Cable (F, L, R, S & U Ratios, Ass'y 3 & 6) |
| 329106-112X | CABLE SHIFT, Less Cable (F, L, R, S & U Ratios, Ass'y 4 & 5) |
| 329106-125X | E-Z SHIFT (Ass'y 3 & 6)                                      |
| 329106-126X | E-Z SHIFT (Ass'y 4 & 5)                                      |
| 329143X     | DUST COVER KIT FOR LEVER & AIR SHIFTERS                      |
|             | <b>446 SERIES</b>  |
| 329106-71X  | AIR SHIFT (Ass'y 3 & 6)                                      |
| 329106-72X  | AIR SHIFT (Ass'y 4 & 5)                                      |
| 329106-75X  | ELECTRIC/AIR 12V (Ass'y 3 & 6)                               |
| 329106-76X  | ELECTRIC/AIR 12V (Ass'y 4 & 5)                               |
| 329106-77X  | ELECTRIC/AIR 24V (Ass'y 3 & 6)                               |
| 329106-78X  | ELECTRIC/AIR 24V (Ass'y 4 & 5)                               |
| 329106-79X  | LEVER SHIFT (Ass'y 3 & 6)                                    |
| 329106-80X  | LEVER SHIFT (Ass'y 4 & 5)                                    |
| 329106-113X | CABLE SHIFT (Q & W Ratios, Ass'y 3 & 6)                      |
| 329106-114X | CABLE SHIFT (Q & W Ratios, Ass'y 4 & 5)                      |
| 329106-117X | CABLE SHIFT (R, S & U Ratios, Ass'y 3 & 6)                   |
| 329106-118X | CABLE SHIFT (R, S & U Ratios, Ass'y 4 & 5)                   |
| 329106-129X | E-Z SHIFT (Ass'y 3 & 6)                                      |
| 329106-130X | E-Z SHIFT (Ass'y 4 & 5)                                      |
| 329143X     | DUST COVER KIT FOR LEVER & AIR SHIFTERS                      |

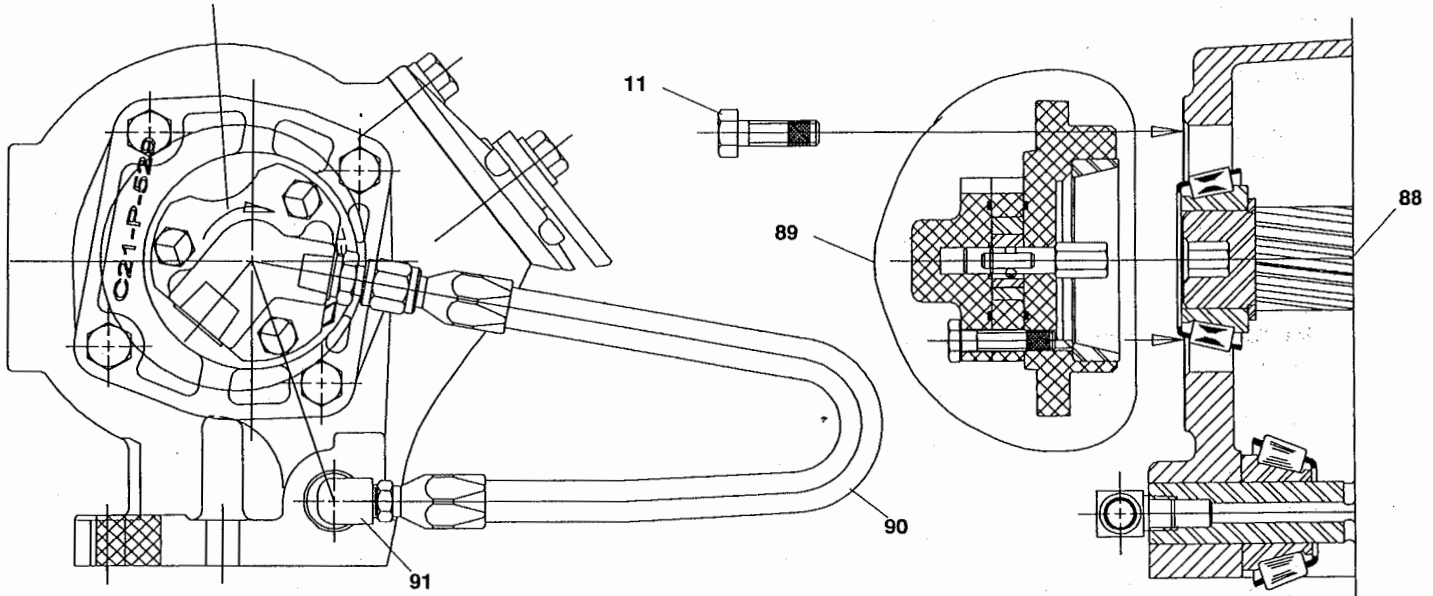
**CONSTANT MESH PARTS ("M" Designator)**



| Item | Part Number         | Description                                     | Quantity |     |
|------|---------------------|---|----------|-----|
|      |                     |   | 440      | 488 |
| 83   | See Chart Pg. 16-17 | OUTPUT GEAR.....                                | 1        | 1   |
| 84   | See Chart Pg. 13-17 | INPUT GEAR.....                                 | 1        | 1   |
| 85   | 4-P-166             | SPACER, Drive Shaft .....                       | 1        | 1   |
| 86   | 4-P-167             | SPACER, Drive Shaft .....                       | 1        | 1   |
| 87   | 378391              | LOCK RING.....                                  | 1        | 1   |
| N.S. | 34-P-39             | COVER PLATE (For Shifter Opening).....          | 1        | 1   |
| N.S. | 35-P-8              | GASKET, Cover Plate (For Shifter Opening) ..... | 1        | 1   |
| N.S. | 378430-6            | HEX CAPSCREW .312-18 X .625.....                | 4        | 4   |

NOTE: The 446 Series is not available as a Constant Mesh P.T.O.

**NOTE:** Pump must rotate in direction of arrow.



**NOTE:** Install Street Elbow into Idler Shaft before installing Idler Shaft.

Pump assembly as shown is for "Q" and "W" Ratios.  
 Rotate as needed for "F", "L", "R", "S" and "U" Ratios.

| Item | Part Number | Description                                    | Quantity |     |     |
|------|-------------|--|----------|-----|-----|
|      |             |  | 440      | 446 | 488 |
| 11   | 378430-10   | HEX CAPSCREW .312-18 x 1.000" .....            | 4        | 4   | 4   |
| 88   | 3-P-857     | OUTPUT SHAFT (LD Output) .....                 | 1        | 1   | 1   |
|      | 3-P-858     | OUTPUT SHAFT (LA, LB, LC, LE, LF Output) ..... | 1        | 1   | 1   |
| 89   | 329091X     | LUBE PUMP & BEARING CAP ASSEMBLY .....         | 1        | 1   | 1   |
| 90   | 329092X     | PRESSURE LUBE HOSE ASSEMBLY .....              | 1        | 1   | 1   |
| 91   | 500841-1    | 90° STREET ELBOW .....                         | 1        | 1   | 1   |



**INPUT GEAR CHART**

| Model Number                           | Part Number | Pitch   | Pressure Angle | Helix Angle      | No. Teeth |
|--|-------------|---------|----------------|------------------|-----------|
| <b>L, Q, R, S, U, W &amp; X Ratios</b> |             |         |                |                  |           |
| 440**AB                                | 5-P-1001    | 5/7     | 20°            | Spur             | 19        |
| 440**AC                                | 5-P-1002    | 5.34737 | 22.5°          | Spur             | 19        |
| 440**AG                                | 5-P-1003    | 6/8     | 17.30°         | Spur             | 22        |
| 440**AH                                | 5-P-1004    | 6/8     | 20°            | Spur             | 22        |
| 440**AL                                | 5-P-1005    | 6.2418  | 19.17°         | Spur             | 22        |
| 440**AP                                | 5-P-1006    | 6       | 17.30°         | 22° 15' L.H.     | 21        |
| 440**AQ                                | 5-P-1007    | 6/8     | 17.30°         | 26° 00' 48" L.H. | 21        |
| 440**AR                                | 5-P-1008    | 6       | 17.30°         | 26° 10' 37" L.H. | 21        |
| 440**AW                                | 5-P-1009    | 6       | 20°            | 17° 40' 41" L.H. | 22        |
| 440**AX                                | 5-P-1010    | 6.100   | 25°            | 18° 40' 48" R.H. | 22        |
| 440**BA                                | 5-P-1011    | 6.540   | 18.465°        | 23° 26' 48" L.H. | 23        |
| 440**BC                                | 5-P-1012    | 6.100   | 25°            | 32° 16' 48" L.H. | 18        |
| 440**BE                                | 5-P-1013    | 7       | 20°            | Spur             | 27        |
| 440**BG                                | 5-P-1015    | 7       | 17.30°         | 28° 04' 23" L.H. | 23        |
| 440**BH                                | 5-P-1016    | 7       | 20°            | 20° R.H.         | 25        |
| 440**BK                                | 5-P-1018    | 7       | 20°            | 28° L.H.         | 23        |
| 440**BL                                | 5-P-1019    | 7       | 20°            | 30° 20' 40" R.H. | 22        |
| 440**BM                                | 5-P-1020    | 7       | 25°            | 30° 46' 48" L.H. | 22        |
| 440**BN                                | 5-P-1021    | 7.1952  | 16.8836°       | 33° 30' L.H.     | 22        |
| 440**BP                                | 5-P-1022    | 7.345   | 20°            | 24° R.H.         | 26        |
| 440**BQ                                | 5-P-1023    | 7.345   | 20°            | 24° L.H.         | 25        |
| 440**BR                                | 5-P-1024    | 7.6168  | 18.489°        | 23° 12' 57" R.H. | 26        |
| 440**BS                                | 5-P-1025    | 7.6168  | 18.489°        | 23° 12' 57" L.H. | 26        |
| 440**BU                                | 5-P-1026    | 8.35    | 20°            | Spur             | 33        |
| 440**BZ                                | 5-P-1028    | 8.0829  | 20°            | 30° L.H.         | 26        |
| 440**CB                                | 5-P-1029    | 8.1160  | 20°            | 33° 30' L.H.     | 25        |
| 440**CD                                | 5-P-1031    | 8.0829  | 20°            | 30° L.H.         | 27        |
| 440**CM                                | 5-P-1035    | 6/8     | 20°            | Spur             | 22        |
| 440**CR                                | 5-P-1036    | 5       | 17.30°         | 24° 48' 42" L.H. | 17        |
| 440**DA                                | 5-P-1037    | 6.48    | 17.6528°       | Spur             | 23        |
| 440**DB                                | 5-P-1038    | 10.10   | 20°            | Spur             | 39        |
| 440**DC                                | 5-P-1039    | 5.08    | 20°            | Spur             | 19        |
| 440**DH                                | 5-P-1041    | 6.35    | 20°            | 21° 45' L.H.     | 21        |
| 440**DJ                                | 5-P-1042    | 8.4666  | 22.30°         | 28° 27' 29" L.H. | 28        |
| 440**DK                                | 5-P-1043    | 7.8154  | 22.30°         | 28° 30' 24" L.H. | 26        |
| 440**DM                                | 5-P-1045    | 5.700   | 25°            | 38° 42' L.H.     | 17        |
| 440**DN                                | 5-P-1046    | 6.100   | 25°            | 32° 30' L.H.     | 19        |
| 440**DQ                                | 5-P-1048    | 5.4978  | 22.30°         | 16° 57' 59" L.H. | 20        |
| 440**DU                                | 5-P-1050    | 7.500   | 22°            | 15° L.H.         | 28        |
| 440**DX                                | 5-P-1052    | 7.3449  | 20°            | 24° L.H.         | 26        |
| 440**DY                                | 5-P-1053    | 5.700   | 25°            | 38° 42' L.H.     | 16        |

(Continued on next page.)

**440 SERIES  
INPUT GEAR CHART**



| Model Number | Part Number | Pitch   | Pressure Angle | Helix Angle      | No. Teeth |
|--------------|-------------|---------|----------------|------------------|-----------|
| 440**EC      | 5-P-1055    | 10.3673 | 20°            | 28° L.H.         | 36        |
| 440**ED      | 5-P-1056    | 9.9608  | 20°            | 28° 30' L.H.     | 34        |
| 440**EL      | 5-P-1075    | 8.00    | 20°            | 15° R.H.         | 30        |
| 440**EP      | 5-P-1057    | 9.6046  | 20°            | 21° 36' R.H.     | 35        |
| 440**ES      | 5-P-1059    | 6.35    | 20°            | 22° L.H.         | 22        |
| 440**EV      | 5-P-1060    | 10.10   | 21.30°         | Spur             | 40        |
| 440**EW      | 5-P-1061    | 6.100   | 20.30°         | 29° L.H.         | 20        |
| 440**FA†     | 5-P-894     | 8.4667  | 20°            | Spur             | 34        |
| 440**FC      | 5-P-1064    | 7.9366  | 22.4987°       | 30° L.H.         | 26        |
| 440**FE      | 5-P-1065    | 8.4667  | 17.30°         | 28.481° L.H.     | 29        |
| 440**FM      | 5-P-1069    | 10      | 20°            | Spur             | 28        |
| 440**FN      | 5-P-1070    | 7.00    | 17.30°         | 18° L.H.         | 26        |
| 440**FP      | 5-P-1071    | 6.773   | 22.30°         | 23° 51' 56" L.H. | 23        |
| 440**FQ      | 5-P-1072    | 6.3500  | 22.30°         | 24° 48' 28" L.H. | 21        |
| 440**FW      | 5-P-1098    | 7.55    | 23°            | 19° L.H.         | 28        |
| 440**GQ      | 5-P-1150    | 8.1935  | 20°            | 29° 59' 17" L.H. | 26        |
| 440**GR      | 5-P-1157    | 6.35    | 20°            | Spur             | 23        |
| 440**GS      | 5-P-1152    | 9.9608  | 20°            | 28° 30' L.H.     | 29        |

†440\*\*FA is used on the Jatco Automatic Transmission. Use 2-P-709 for the output gear.

| 440 SERIES INPUT RATIO GEAR CHART |                     |           | 440 SERIES OUTPUT GEAR CHART |             |           |
|-----------------------------------|---------------------|-----------|------------------------------|-------------|-----------|
| Ratio                             | Part Number         | No. Teeth | Ratio                        | Part Number | No. Teeth |
| F                                 | See Chart Next Page |           | F                            | 2-P-726     | 37        |
| L                                 | 5-P-964             | 25        | L                            | 2-P-727     | 34        |
| Q                                 | 5-P-965             | 19        | Q                            | 2-P-559     | 24        |
| R                                 | 5-P-1214            | 22        | R                            | 2-P-559     | 24        |
| S                                 | 5-P-966             | 24        | S                            | 2-P-637     | 22        |
| U                                 | 5-P-967             | 26        | U                            | 2-P-560     | 20        |
| W                                 | 5-P-968             | 26        | W                            | 2-P-561     | 17        |
| X                                 | 5-P-969             | 38        | X                            | 2-P-728     | 21        |

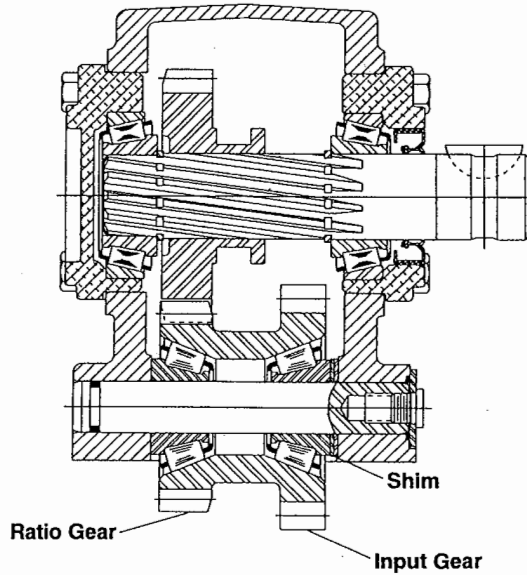


**INPUT GEAR CHART**

| Model Number        | Part Number | Pitch   | Pressure Angle | Helix Angle      | No. Teeth (Input Gear) | No. Teeth (Ratio Gear) |
|---------------------|-------------|---------|----------------|------------------|------------------------|------------------------|
| <b>F Ratio Only</b> |             |         |                |                  |                        |                        |
| 440*FAB             | 5-P-1076    | 5/7     | 20°            | Spur             | 19                     | 21                     |
| 440*FAH             | 5-P-1077    | 6/8     | 20°            | Spur             | 22                     | 21                     |
| 440*FAP             | 5-P-1079    | 6       | 17.30°         | 22° 15' L.H.     | 21                     | 21                     |
| 440*FAR             | 5-P-1080    | 6       | 17.30°         | 26° 10' 37" L.H. | 21                     | 21                     |
| 440*FBC             | 5-P-1081    | 6.100   | 25°            | 32° 16' 48" L.H. | 18                     | 21                     |
| 440*FBG             | 5-P-1082    | 7       | 17.30°         | 28° 04' 23" L.H. | 23                     | 21                     |
| 440*FBM             | 5-P-1083    | 7       | 25°            | 30° 46' 48" L.H. | 22                     | 21                     |
| 440*FBQ             | 5-P-1084    | 7.34498 | 20°            | 24° L.H.         | 25                     | 21                     |
| 440*FDA             | 5-P-1085    | 6.4800  | 17.6528°       | Spur             | 23                     | 21                     |
| 440*FDJ             | 5-P-1086    | 8.467   | 22.30°         | 28° 27' 29" L.H. | 28                     | 21                     |
| 440*FDN             | 5-P-1087    | 6.100   | 25°            | 32° 30' L.H.     | 19                     | 21                     |
| 440*FDU             | 5-P-1088    | 7.500   | 22°            | 15° L.H.         | 28                     | 21                     |
| 440*FEC             | 5-P-1089    | 10.3673 | 20°            | 28° L.H.         | 36                     | 21                     |
| 440*FED             | 5-P-1090    | 9.9608  | 20°            | 28° 30' L.H.     | 34                     | 21                     |
| 440*FEP             | 5-P-1091    | 9.6046  | 20°            | 21° 36' R.H.     | 35                     | 21                     |
| 440*FES             | 5-P-1092    | 6.35    | 20°            | 22° L.H.         | 22                     | 21                     |
| 440*FEV             | 5-P-1094    | 10.10   | 21.30°         | Spur             | 40                     | 21                     |
| 440*FEW             | 5-P-1095    | 6.100   | 20.30°         | 29° L.H.         | 20                     | 21                     |
| 440*FFE             | 5-P-1096    | 8.4667  | 17.30°         | 28.481° L.H.     | 29                     | 21                     |
| 440*FFN             | 5-P-1097    | 7       | 17.30°         | 18° L.H.         | 26                     | 21                     |
| 440*FGQ             | 5-P-1149    | 8.1935  | 20°            | 29° 59' 17" L.H. | 26                     | 21                     |
| 440*FGS             | 5-P-1151    | 9.9608  | 20°            | 28° 30' L.H.     | 29                     | 21                     |



446 SERIES  
GEAR CHART



| Model Number | Input Gear Part Number | Pitch  | Pressure Angle | Helix Angle   | No. Teeth* (Input Gear) | No. Teeth** (Ratio Gear) | Output Gear |           |
|--------------|------------------------|--------|----------------|---------------|-------------------------|--------------------------|-------------|-----------|
|              |                        |        |                |               |                         |                          | Part Number | No. Teeth |
| 446*QCD      | 5-P-1178               | 8.0829 | 20°            | 30° L.H.      | 27                      | 19                       | 2-P-697     | 24        |
| 446*QES      | 5-P-869                | 6.35   | 20°            | 22° L.H.      | 22                      | 19                       | 2-P-697     | 24        |
| 446*QET      | 5-P-865                | 6.5    | 20°            | 23° L.H.      | 19                      | 19                       | 2-P-697     | 24        |
| 446*QFX      | 5-P-979                | 6.9589 | 20°            | 25° L.H.      | 29                      | 19                       | 2-P-697     | 24        |
| 446*QGP      | 5-P-1145               | 6.2716 | 22.5°          | Spur          | 23                      | 19                       | 2-P-697     | 24        |
| 446*RCD      | 5-P-1218               | 8.0829 | 20°            | 30° L.H.      | 27                      | 22                       | 2-P-697     | 24        |
| 446*RES      | 5-P-1216               | 6.35   | 20°            | 22° L.H.      | 22                      | 22                       | 2-P-697     | 24        |
| 446*RET      | 5-P-1215               | 6.5    | 20°            | 23° L.H.      | 19                      | 22                       | 2-P-697     | 24        |
| 446*RGP      | 5-P-1217               | 6.2716 | 22.5°          | Spur          | 23                      | 22                       | 2-P-697     | 24        |
| 446*SCD      | 5-P-1179               | 8.0829 | 20°            | 30° L.H.      | 27                      | 24                       | 2-P-698     | 22        |
| 446*SES      | 5-P-870                | 6.35   | 20°            | 22° L.H.      | 22                      | 24                       | 2-P-698     | 22        |
| 446*SET      | 5-P-866                | 6.5    | 20°            | 23° L.H.      | 19                      | 24                       | 2-P-698     | 22        |
| 446*SGP      | 5-P-1146               | 6.2716 | 22.5°          | Spur          | 23                      | 24                       | 2-P-698     | 22        |
| 446*UCD      | 5-P-1180               | 8.0829 | 20°            | 30° L.H.      | 27                      | 26                       | 2-P-699     | 20        |
| 446*UES      | 5-P-871                | 6.35   | 20°            | 22° L.H.      | 22                      | 26                       | 2-P-699     | 20        |
| 446*UET      | 5-P-867                | 6.5    | 20°            | 23° L.H.      | 19                      | 26                       | 2-P-699     | 20        |
| 446*UFE      | 5-P-889                | 8.4667 | 17.5°          | 28.481° L.H.  | 24                      | 26                       | 2-P-699     | 20        |
| 446*UGP      | 5-P-1147               | 6.2716 | 22.5°          | Spur          | 23                      | 26                       | 2-P-699     | 20        |
| 446*WCD      | 5-P-1181               | 8.0829 | 20°            | 30° L.H.      | 27                      | 26                       | 2-P-700     | 17        |
| 446*WES      | 5-P-872                | 6.35   | 20°            | 22° L.H.      | 22                      | 26                       | 2-P-700     | 17        |
| 446*WET      | 5-P-868                | 6.5    | 20°            | 23° L.H.      | 19                      | 26                       | 2-P-700     | 17        |
| 446*WFE      | 5-P-890                | 8.4667 | 17.5°          | 28.481° L.H.  | 29                      | 26                       | 2-P-700     | 17        |
| 446*WGD      | 5-P-988                | 5.2917 | 24°            | 11.4167° R.H. | 19                      | 26                       | 2-P-700     | 17        |
| 446*WGP      | 5-P-1148               | 6.2716 | 22.5°          | Spur          | 23                      | 26                       | 2-P-700     | 17        |

- Input gear meshes with the transmission
- Ratio gear meshes with the P.T.O. Output Gear

**NOTE:** The unique design of the 446 Series input gear requires that the Spacers used to shim the input bearings be placed opposite of the normal position found on the 440 and 488 series. For the 446 Series install the Input gear spacers (item 18 on pg. 3) on the idler shaft between the Input Gear and PTO housing.



**INPUT GEAR CHART**

| Model Number                        | Input Gear Part Number | Pitch  | Pressure Angle | Helix Angle      | No. Teeth |
|-------------------------------------|------------------------|--------|----------------|------------------|-----------|
| <b>L, Q, S, U, W &amp; X Ratios</b> |                        |        |                |                  |           |
| 488**AB                             | 5-P-1001               | 5/7    | 20°            | Spur             | 19        |
| 488**AH                             | 5-P-1004               | 6/8    | 20°            | Spur             | 22        |
| 488**AR                             | 5-P-1008               | 6      | 17.30°         | 26° 10' 37" L.H. | 21        |
| 488**BG                             | 5-P-1015               | 7      | 17.30°         | 28° 04' 23" L.H. | 23        |
| 488**DA                             | 5-P-1037               | 6.4800 | 17.6528°       | Spur             | 23        |
| 488**DU                             | 5-P-1050               | 7.500  | 22°            | 15° L.H.         | 28        |
| 488**EV                             | 5-P-1060               | 10.10  | 21.30°         | Spur             | 40        |

| 488 SERIES INPUT RATIO GEAR CHART |                        |           | 488 SERIES OUTPUT GEAR CHART |             |           |
|-----------------------------------|------------------------|-----------|------------------------------|-------------|-----------|
| Ratio                             | Input Gear Part Number | No. Teeth | Ratio                        | Part Number | No. Teeth |
| F                                 | See Chart Below        |           | F                            | 2-P-726     | 37        |
| L                                 | 5-P-964                | 25        | L                            | 2-P-727     | 34        |
| Q                                 | 5-P-965                | 19        | Q                            | 2-P-559     | 24        |
| R                                 | 5-P-1214               | 22        | R                            | 2-P-559     | 24        |
| S                                 | 5-P-966                | 24        | S                            | 2-P-637     | 22        |
| U                                 | 5-P-967                | 26        | U                            | 2-P-560     | 20        |
| W                                 | 5-P-968                | 26        | W                            | 2-P-561     | 17        |
| X                                 | 5-P-969                | 38        | X                            | 2-P-728     | 21        |

**488 "F" RATIO GEAR CHART**

| Model Number        | Input Gear Part Number | Pitch | Pressure Angle | Helix Angle      | No. Teeth (Input Gear) | No. Teeth (Ratio Gear) |
|---------------------|------------------------|-------|----------------|------------------|------------------------|------------------------|
| <b>F Ratio Only</b> |                        |       |                |                  |                        |                        |
| 488*FAB             | 5-P-1076               | 5/7   | 20°            | Spur             | 19                     | 21                     |
| 488*FAH             | 5-P-1077               | 6/8   | 20°            | Spur             | 22                     | 21                     |
| 488*FAR             | 5-P-1080               | 6     | 17.30°         | 26° 10' 37" L.H. | 21                     | 21                     |
| 488*FBG             | 5-P-1082               | 7     | 17.30°         | 28° 04' 23" L.H. | 23                     | 21                     |
| 488*FDU             | 5-P-1088               | 7.500 | 22°            | 15° L.H.         | 28                     | 21                     |
| 488*FEV             | 5-P-1094               | 10.10 | 21.30°         | Spur             | 40                     | 21                     |



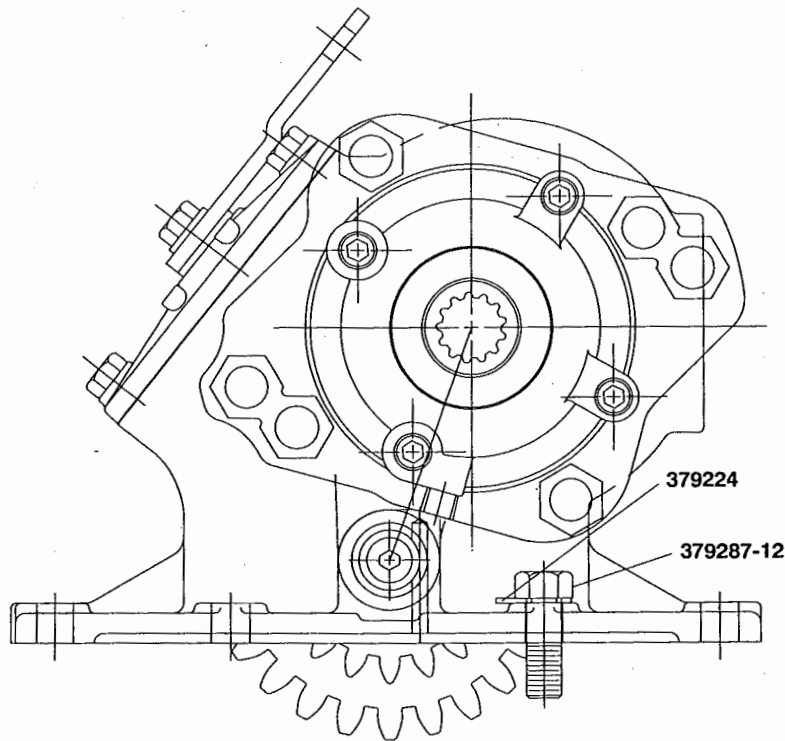
**DIRECT MOUNT PUMP CONVERSION KITS**

| Flange Suffix | Flange Type  | Shaft Type      | Conversion Kit * |
|---------------|--|-----------------|------------------|
| AF            | S.A.E. "BB" 2 or 4 bolt                                  | 1"-15 Spline    | 328591-30X       |
| AK            | S.A.E. "B" 2 bolt  | 7/8"-13 Spline  | 328591-28X       |
| FF            | S.A.E. "B" 2 or 4 bolt                                   | 7/8" Round      | 328591-29X       |
| LA•           | S.A.E. "B" 2 bolt  | 7/8"- 13 Spline | 328591-44X       |
| LB•           | S.A.E. "A" Pilot 2 bolt                                  | 7/8"-13 Spline  | 328591-45X       |
| LC•           | S.A.E. "B" 2 or 4 bolt                                   | 7/8"-13 Spline  | 328591-46X       |
| LE•           | 6 Bolt Round   | 7/8"-13 Spline  | 328591-47X       |
| LF•           | S.A.E. "B" 2 or 4 bolt                                   | 7/8"-13 Spline  | 328591-48X       |
| RA            | S.A.E. "B" 2 bolt  | 7/8"-13 Spline  | 328591-55X       |
| RB            | S.A.E. "B" 4 bolt  | 7/8"-13 Spline  | 328591-56X       |
| XE            | S.A.E. "A" 2 or 4 bolt                                   | 5/8"- 9 Spline  | 328591-27X       |
| XG            | Non-Standard 4 bolt                                      | 3/4" Round      | 328591-10X       |
| XJ            | Non-Standard 4 bolt                                      | 3/4" Round      | 328591-11X       |
| XK            | S.A.E. "B" 2 or 4 bolt                                   | 7/8"-13 Spline  | 328591-16X       |
| XL            | Non-Standard 4 bolt                                      | 7/8"-13 Spline  | 328591-18X       |
| XM            | Non-Standard 4 bolt                                      | 3/4" Round      | 328591-20X       |
| XN            | 6 Bolt Round   | 7/8"-13 Spline  | 328591-21X       |
| XO            | S.A.E. "A" Pilot 2 bolt                                  | 3/4" Round      | 328591-26X       |
| XP            | S.A.E. "A" Pilot 2 bolt                                  | 7/8"-13 Spline  | 328591-23X       |
| XQ **         | S.A.E. "B" 2 or 4 bolt                                   | 7/8"-13 Spline  | 328591-17X       |
| XR            | Chelsea Special<br>XR to "XK" Conversion Flange 21-P-525 | 7/8"-13 Spline  | 328591-52X       |

• Lube Pump Option

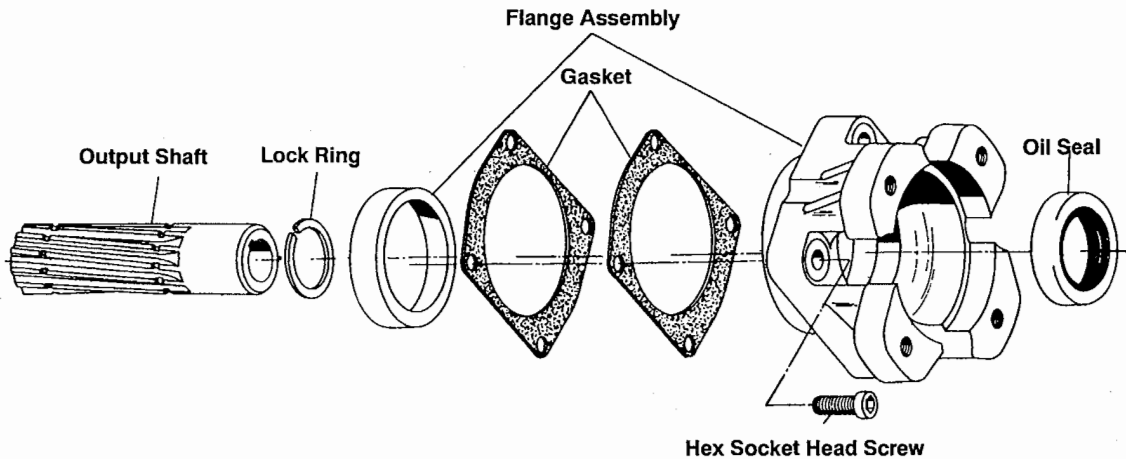
\*\*Similar to "K" Assembly, only rotated 65°.

**488 SERIES  
PUMP FLANGE CONVERSION FOR  
AF, FF, LB, LC, LF, XE, XK, XO, XP, AND XQ**



When converting a 488 series standard output shaft to the above pump flanges it will be necessary to install the following two parts: one hex head capscrew (379287-12) and a tab lock washer (379224) from the 328170-127X mounting stud kit. These items must be installed in the mounting hole before the pump flange is attached. Do not bend over the tabs of the lock washer. This will be done when the PTO is installed on the vehicle.

**PUMP CONVERSION KIT BILL OF MATERIAL**



| Flange Suffix | Conversion Kit * | Flange Assembly | Output Shaft | Socket Head (4 Req'd) | Oil Seal |
|---------------|------------------|-----------------|--------------|-----------------------|----------|
| AF            | 328591-30X       | 329088X         | 3-P-854      | 378447-10             | 28-P-219 |
| AK            | 328591-28X       | 328989X         | 3-P-282      | 378447-8              | 28-P-216 |
| FF            | 328591-29X       | 329088X         | 3-P-851      | 378447-10             | 28-P-219 |
| LA•           | 328591-44X       | 328989X         | 3-P-858      | 378447-8              | 28-P-216 |
| LB•           | 328591-45X       | 328328X         | 3-P-858      | 378447-8              | 28-P-216 |
| LC•           | 328591-46X       | 328589X         | 3-P-858      | 378447-8              | 28-P-216 |
| LE•           | 328591-47X       | 328584X         | 3-P-858      | 378447-8              | 28-P-216 |
| LF•           | 328591-48X       | 328333X         | 3-P-858      | 378447-8              | 28-P-216 |
| RA            | 328591-55X       | 329195X         | 3-P-283      | 378447-6(††)          | 28-P-216 |
| RB            | 328591-56X       | 329195X         | 3-P-283      | 378447-6(††)          | 28-P-216 |
| XE            | 328591-27X       | 328328X         | 3-P-800      | 378447-8              | 28-P-216 |
| XG            | 328591-10X       | 328580X         | 3-P-281      | 378447-8              | 28-P-216 |
| XJ            | 328591-11X       | 328580X         | 3-P-284      | 378447-8              | 28-P-216 |
| XK            | 328591-16X       | 328333X         | 3-P-282      | 378447-8              | 28-P-216 |
| XL            | 328591-18X       | 328580X         | 3-P-283      | 378447-8              | 28-P-216 |
| XM            | 328591-20X       | 328583X         | 3-P-284      | 378447-8              | 28-P-216 |
| XN            | 328591-21X       | 328584X         | 3-P-282      | 378447-8              | 28-P-216 |
| XO            | 328591-26X       | 328328X         | 3-P-284      | 378447-8              | 28-P-216 |
| XP            | 328591-23X       | 328328X         | 3-P-282      | 378447-8              | 28-P-216 |
| XQ **         | 328591-17X       | 328589X         | 3-P-282      | 378447-8              | 28-P-216 |
| XR            | 328591-52X       | 329194X         | 3-P-283      | 379673(†)             | 28-P-216 |

• Lube Pump Option

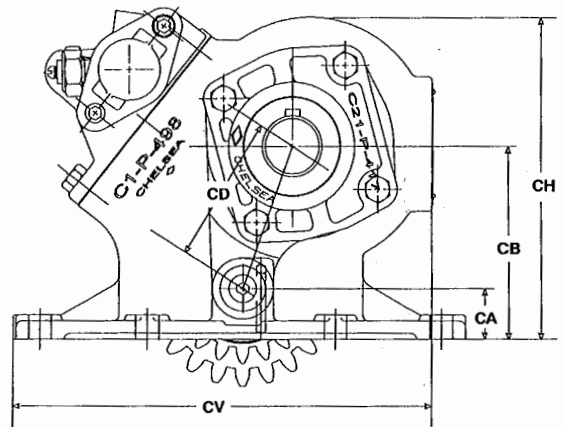
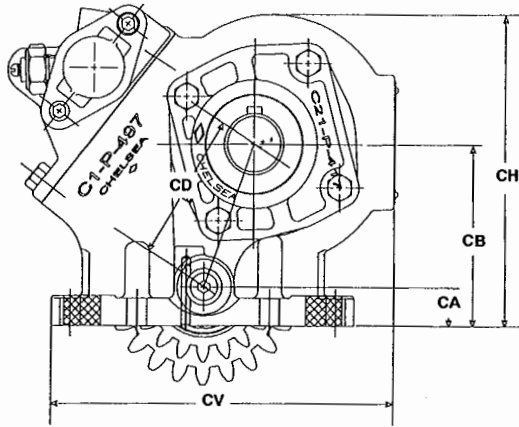
\* Consists of all items shown in the illustration, plus Lock Ring (item 5) and Bearing Cap Gasket (item 8).

\*\* Similar to "K" Assembly, only rotated 65°.

† Special shoulder stud

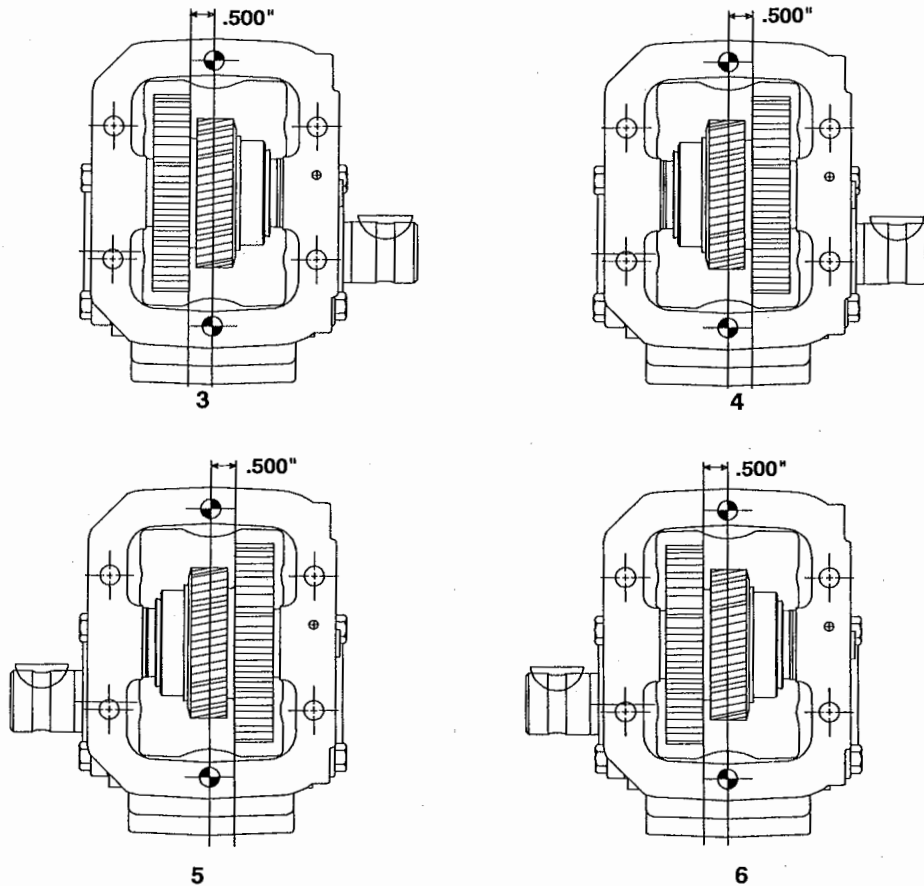
††Seven required; four to fasten the Flange Assembly 328195X to the housing and three to fasten the rotatable flange to the flange assembly.

**NOTE:** To convert PTO's with AK, XP, XQ, XN, or XK output to the lube pump option, use 329097-1X.  
 To convert PTO's with XD output to the lube pump option, use 329096-1X

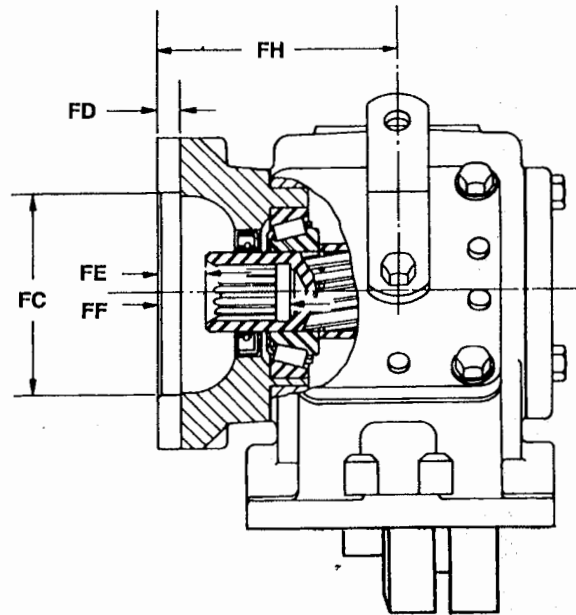


| PTO Series         | Part Number | CA    | CB                                 | CD                               | CH    | CV    |
|--------------------|-------------|-------|------------------------------------|----------------------------------|-------|-------|
| 440/446 Standard   | 1-P-495X    | 0.792 | 3.700 (Q,W,X)<br>3.799 (F,L,R,S,U) | 2.908 (Q,W,X)<br>3.007 (F,L,S,U) | 6.375 | 7.000 |
| 440/446 Deep Mount | 1-P-496X    | 0.572 | 3.480 (Q,W,X)<br>3.579 (F,L,R,S,U) | 2.908 (Q,W,X)<br>3.007 (F,L,S,U) | 6.155 | 7.000 |
| 440J Jatco         | 1-P-527     | 0.575 | 3.534                              | 3.200                            | 6.158 | 7.000 |
| 488                | 1-P-499X    | 1.040 | 3.948 (Q,W,X)<br>4.047 (F,L,R,S,U) | 3.087 (Q,W,X)<br>3.317 (F,L,S,U) | 6.594 | 8.500 |

**ASSEMBLY ARRANGEMENTS**



**PUMP FLANGE & SHAFT DIMENSIONS**

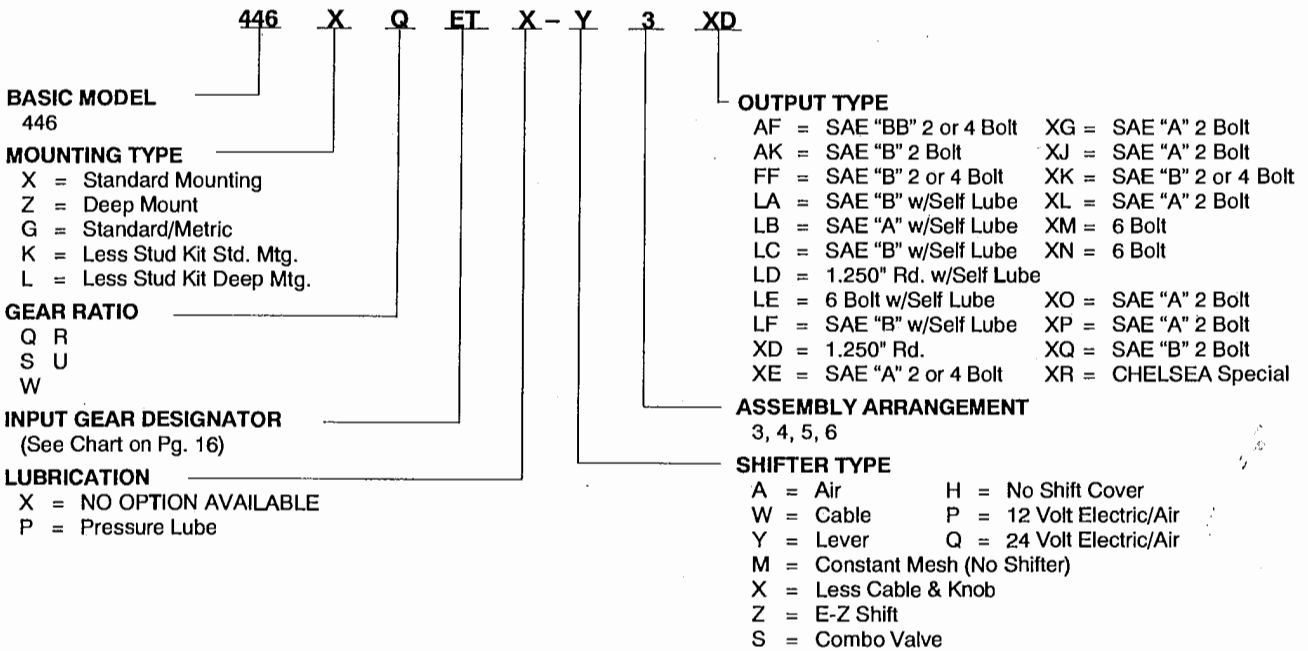
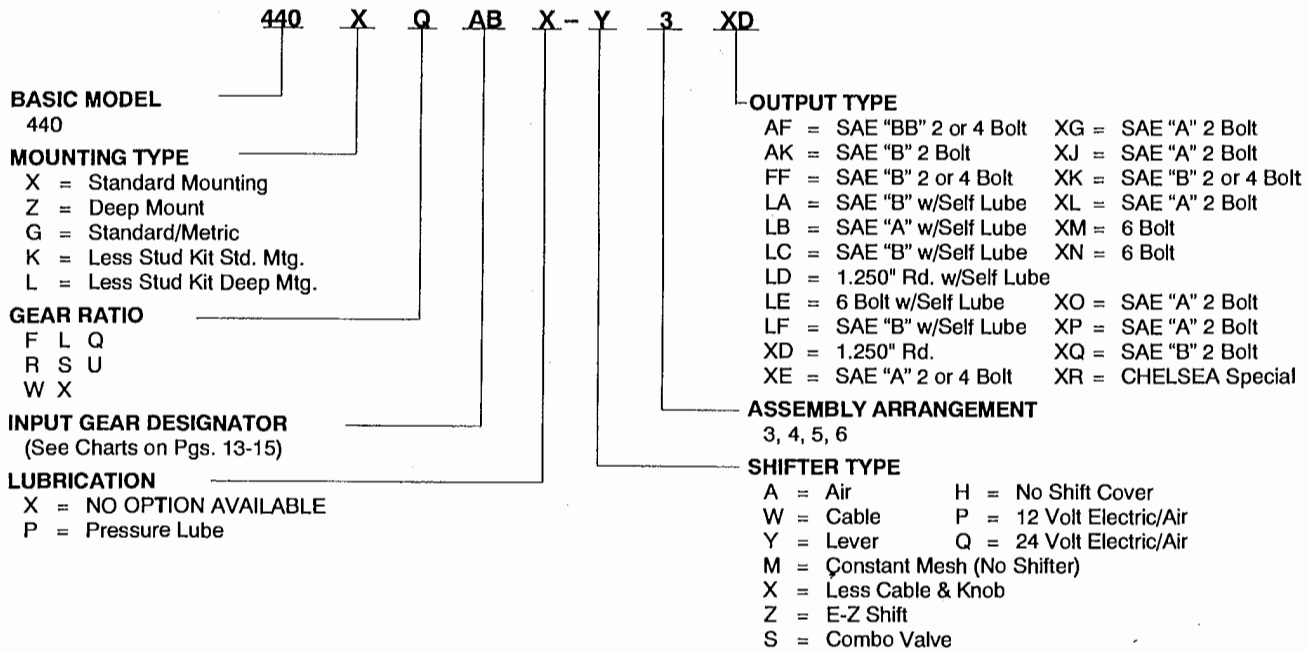


**PUMP FLANGE & SHAFT DIMENSIONS**

| Pump Flange Suffix | Bolt Circle Dia. | BOLT HOLES  |                    | FC<br>Female Pilot Diameter | FD<br>Pilot Depth | FE<br>Face to end of Shaft | FF<br>Face thru Hole | FH<br>Face to Center of PTO | OUTPUT SHAFT<br>Hole Dia. | Keyway Width |
|--------------------|------------------|-------------|--------------------|-----------------------------|-------------------|----------------------------|----------------------|-----------------------------|---------------------------|--------------|
|                    |                  | Tapped Hole | No. Equally Spaced |                             |                   |                            |                      |                             |                           |              |
| AF                 | 5.00             | .500"-13    | 4                  | 4.003                       | .406              | .516                       | 1.984                | 4.389                       | 1"-15 Spline              | —            |
|                    | 5.75             | .500"-13    | 2                  | 4.003                       | .406              | .516                       | 1.984                | 4.389                       | 1"-15 Spline              | —            |
| AK                 | 5.75             | .500"-13    | 2                  | 4.003                       | .406              | .562                       | 2.062                | 3.688                       | 7/8"-13 Spline            | —            |
|                    | 5.00             | .500"-13    | 4                  | 4.003                       | .406              | .516                       | 1.984                | 4.389                       | 7/8" Round                | 1/4"         |
| FF                 | 5.75             | .500"-13    | 2                  | 4.003                       | .406              | .516                       | 1.984                | 4.389                       | 7/8" Round                | 1/4"         |
|                    | 5.00             | .500"-13    | 4                  | 4.003                       | .406              | .562                       | 2.062                | 3.688                       | 7/8"-13 Spline            | —            |
| LA                 | 5.75             | .500"-13    | 2                  | 4.003                       | .406              | .562                       | 2.062                | 3.688                       | 7/8"-13 Spline            | —            |
|                    | 5.00             | .500"-13    | 4                  | 3.253                       | .344              | .562                       | 2.062                | 3.688                       | 7/8"-13 Spline            | —            |
| LC                 | 5.00             | .500"-13    | 4                  | 4.003                       | .406              | .562                       | 2.062                | 3.688                       | 7/8"-13 Spline            | —            |
|                    | 5.75             | .500"-13    | 2                  | 4.003                       | .406              | .562                       | 2.062                | 3.688                       | 7/8"-13 Spline            | —            |
| LE                 | 4.75             | .406"       | 6                  | 3.253                       | .375              | .750                       | 2.250                | 3.875                       | 7/8"-13 Spline            | —            |
|                    | 5.00             | .500"-13    | 4                  | 4.003                       | .406              | .562                       | 2.062                | 3.688                       | 7/8"-13 Spline            | —            |
| LF                 | 5.75             | .500"-13    | 2                  | 4.003                       | .406              | .562                       | 2.062                | 3.688                       | 7/8"-13 Spline            | —            |
|                    | 5.00             | .500"-13    | 4                  | 4.003                       | .406              | .558                       | 2.058                | 4.558                       | 7/8"-13 Spline            | —            |
| RA                 | 5.75             | .500"-13    | 2                  | 4.003                       | .406              | .558                       | 2.058                | 4.558                       | 7/8"-13 Spline            | —            |
|                    | 5.00             | .500"-13    | 4                  | 4.003                       | .406              | .562                       | 1.500                | 3.688                       | 5/8"-9 Spline             | —            |
| XE                 | 5.00             | .500"-13    | 4                  | 3.253                       | .344              | .562                       | 2.331                | 4.582                       | 3/4" Round                | 3/16"        |
|                    | 4.19             | .375"-16    | 4                  | 3.253                       | .562              | 1.406                      | 3.018                | 4.582                       | 3/4" Round                | 3/16"        |
| XG                 | 4.19             | .375"-16    | 4                  | 3.253                       | .562              | .562                       | 2.062                | 3.688                       | 7/8"-13 Spline            | —            |
|                    | 5.00             | .500"-13    | 4                  | 4.003                       | .406              | .562                       | 2.062                | 3.688                       | 7/8"-13 Spline            | —            |
| XK                 | 5.75             | .500"-13    | 2                  | 4.003                       | .406              | .562                       | 2.062                | 3.688                       | 7/8"-13 Spline            | —            |
|                    | 4.19             | .375"-16    | 4                  | 3.253                       | .562              | .562                       | 2.062                | 4.562                       | 7/8"-13 Spline            | —            |
| XL                 | 4.19             | .375"-16    | 4                  | 3.253                       | .562              | .562                       | 2.062                | 4.562                       | 7/8"-13 Spline            | —            |
|                    | 3.25             | .375"-16    | 6                  | 2.628                       | .688              | .312                       | 1.812                | 3.438                       | 3/4" Round                | 3/16"        |
| XM                 | 4.75             | .406"       | 6                  | 3.253                       | .375              | .750                       | 2.250                | 3.875                       | 7/8"-13 Spline            | —            |
|                    | 5.00             | .500"-13    | 4                  | 3.253                       | .344              | .562                       | 2.062                | 3.688                       | 3/4" Round                | 3/16"        |
| XO                 | 5.00             | .500"-13    | 4                  | 3.253                       | .344              | .562                       | 2.062                | 3.688                       | 7/8"-13 Spline            | —            |
|                    | 5.00             | .500"-13    | 4                  | 4.003                       | .406              | .562                       | 2.062                | 3.688                       | 7/8"-13 Spline            | —            |
| XP                 | 5.00             | .500"-13    | 4                  | 4.003                       | .406              | .562                       | 2.062                | 3.688                       | 7/8"-13 Spline            | —            |
|                    | 5.75             | .500"-13    | 2                  | 4.003                       | .406              | .562                       | 2.062                | 3.688                       | 7/8"-13 Spline            | —            |
| XQ                 | 5.00             | .500"-13    | 4                  | 4.003                       | .406              | .562                       | 2.062                | 3.688                       | 7/8"-13 Spline            | —            |
|                    | 5.75             | .500"-13    | 2                  | 4.003                       | .406              | .562                       | 2.062                | 3.688                       | 7/8"-13 Spline            | —            |
| XR                 | 3.71             | .312"-24    | 4                  | 2.752                       | .281              | N/A                        | N/A                  | 2.809                       | 7/8"-13 Spline            | —            |

**NOTE:** To convert an "XR" to an "XK", use conversion flange number 21-P-525.

# 440 & 446 SERIES MODEL NUMBER DESIGNATION



For parts or service call us  
Pro Gear & Transmission, Inc.



**1 (877) 776-4600**

**(407) 872-1901**

**parts@eprogear.com**

**906 W. Gore St.**

**Orlando, FL 32805**

